



# Westminster Presbyterian Church

*We are called to be and to make disciples who love  
God and who love our neighbors.*

June 9, 2024

11:00 a.m.

*Please greet each other warmly as the congregation gathers for worship.  
Take a moment and sign the virtual friendship register*

PRELUDE

Lord, Who the Night You Were Betrayed

JAMES MANSFIELD

WELCOME AND ANNOUNCEMENTS

PRAYERS FOR THE MONTREAT YOUTH CONFERENCE

◆ SONG OF PREPARATION NO. 413

Come into God's Presence

COME INTO HIS PRESENCE

Come into God's presence singing  
"Alleluia, alleluia, alleluia."

Come into God's presence singing  
"Jesus is Lord, Jesus is Lord, Jesus is Lord."

Praise the Lord together singing  
"Worthy the Lamb, worthy the Lamb, worthy the Lamb."

Praise the Lord together singing  
"Glory to God, glory to God, glory to God."

◆ CALL TO WORSHIP

FROM PSALM 46

One: God is our refuge and strength, an ever-present help in trouble.

All: **Therefore we will not fear, though the earth give way  
and the mountains fall into the heart of the sea.**

One: There is a river whose streams make glad the city of God,  
the holy place where the most high dwells.  
God is within her, she will not fall.

All: **The LORD Almighty is with us, the God of Jacob is our fortress.**

One: "Be still and know that I am God;  
I will be exalted among the nations,  
I will be exalted in the earth."

All: **The LORD of hosts is with us,  
the God of Jacob is our fortress.**

◆ INVOCATION

◆ PRAYER OF CONFESSION

Almighty God, in whom we live and move and have our being; we are the clay, and you are the potter; we are the work of your hand. Yet we resist your purposes for us, and we have sought instead to satisfy our own aims and desires. We desperately need your forgiveness. Do not treat us as we deserve, but remember your promises and be merciful to us. Come to us, revive us, renew us, to your eternal honor and glory.

◆ ASSURANCE OF GOD'S PARDON

◆ SONG OF RESPONSE

Glory to God, Whose Goodness Shines on Me

Glory to God, whose goodness shines on me,  
and to the Son, whose grace has pardoned me,  
and to the Spirit, whose love has set me free.  
As it was in the beginning, is now and ever shall be. Amen.

World without end, without end. Amen.  
World without end, without end. Amen.  
World without end, without end. Amen.  
As it was in the beginning, is now and ever shall be. Amen.

WELCOMING NEW MEMBERS

Dave and Judi Gillespie  
Emma Fruth

THE SACRAMENT OF BAPTISM

Administered to Emma Lynn Fruth  
*Nancy Dixon, assisting Elder*

◆ AFFIRMATION OF FAITH

THE APOSTLES' CREED

I believe in God the Father Almighty,  
maker of heaven and earth,  
and in Jesus Christ his only Son our Lord  
who was conceived by the Holy Ghost,  
born of the Virgin Mary, suffered under Pontius Pilate,  
was crucified, dead, and buried; he descended into hell;  
the third day he rose again from the dead;  
he ascended into heaven, and sitteth on the right hand of God the Father Almighty;  
from thence he shall come to judge the quick and the dead.

I believe in the Holy Ghost;  
the holy catholic church; the communion of saints;  
the forgiveness of sins; the resurrection of the body; and the life everlasting. Amen

◆ SHARING CHRIST'S PEACE

One: The peace of Christ be with you!  
All: And also with you!

*Please share the peace of Christ with your neighbor*

*Following Children's Time, children ages 2-3K (Wee Church) and 4-5 K (Children's Church) will gather in the narthex with adult leaders and then be led to the Children's Building. Parents may pick them up following the service.*

## ANTHEM

My Song Is Love Unknown

MARK SCHWEIZER

*My song is love unknown, my Savior's love to me, love to the loveless shown that they might lovely be.  
O who am I that for my sake my Lord should take frail flesh and die?  
Christ came from heaven's throne salvation to bestow, but people scorned and none the longed for Christ would know.  
But O, my friend indeed, who at my need His life did spend! Here might I stay and sin, no story so divine:  
Never was love, dear King, never was grief like Thine.  
This is my friend, in whose sweet praise I all my days could gladly spend. (Samuel Crossman, 1664)*

## SCRIPTURE

Matthew 26:31-46

PEW BIBLE N.T. PAGE 30

## SERMON

Not My Will but Yours

## ◆ HYMN OF RESPONSE

In Christ Alone

INSERT

## PASTORAL PRAYER AND THE LORD'S PRAYER

**Our Father, who art in heaven, hallowed be thy name, thy kingdom come, thy will be done, on earth as it is in heaven. Give us this day our daily bread; and forgive us our debts as we forgive our debtors; and lead us not into temptation, but deliver us from evil. For thine is the kingdom, and the power, and the glory forever. Amen**

## ◆ HYMN NO. 69

Here I Am, Lord

HERE I AM (SCHUTTE)

## ◆ BENEDICTION

## ◆ POSTLUDE

Tuckets and Tabors

FRED. B BINCKES

◆ *Please stand, if able*

**LEADING THE SERVICE TODAY:** Daniel Smoak, Pastor; Sarah Shayban, Music

Acolytes: Miles Chandler, Harper Lewandowski

Children's Church: Dee Bee and John Wright

Wee Church: Ann Camburn and Janie Bruce

Ushers: Greg Ramsay \*, Henry Shepard, Ruth Marie Embler, Ben Whitener

11:00 am Livestream at [www.wpccharleston.org](http://www.wpccharleston.org), YouTube (Westminster Presbyterian Charleston)

You may also listen to the weekly sermon by utilizing *Sermon By Phone* and calling 843-252-0146.

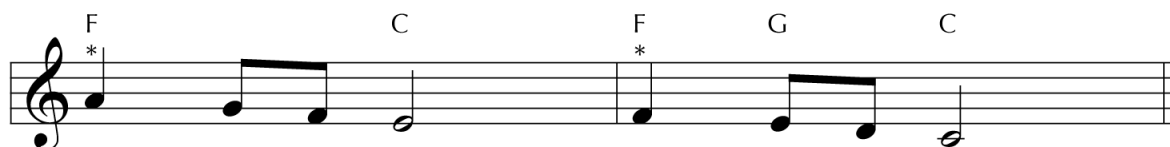
Permission to podcast/stream the music in this service obtained from CCLI License #2778901

*The rosebud in the Sanctuary is given to the glory of God and in celebration of the birth of Aubrey Jane Gaither, born May 31, 2024. Her parents are Zach and Caroline Gaither; her grandparents are Jimmy and Brenda Gibson.*

# Come into God's Presence 413



- 1 Come in - to God's pres-ence sing - ing "Al - le - lu - ia,
- 2 Come in - to God's pres-ence sing - ing "Je - sus is Lord,
- 3 Praise the Lord to - geth - er sing - ing "Wor - thy the Lamb,
- 4 Praise the Lord to - geth - er sing - ing "Glo - ry to God,



- |                     |                      |
|---------------------|----------------------|
| al - le - lu - ia,  | al - le - lu - ia."  |
| Je - sus is Lord,   | Je - sus is Lord."   |
| wor - thy the Lamb, | wor - thy the Lamb." |
| glo - ry to God,    | glo - ry to God."    |

*\*May be sung as a canon.*

This anonymous worship chorus is thought to have been created extemporaneously during the 1960s and was one of the earliest songs of that kind. The opening line of the text is a paraphrase of Psalm 100:2, and the very act of singing this song fulfills that verse's invitation.

# 275 A Mighty Fortress Is Our God

1 A might - y for - tress is our God, a bul-wark nev - er  
 2 Did we in our own strength con - fide, our striv - ing would be  
 3 And though this world, with dev - ils filled, should threat - en to un -  
 4 That word a - bove all earth - ly powers, no thanks to them, a -

fail - ing. Our help - er he, a - mid the flood of  
 los - ing, were not the right man on our side, the  
 do us, we will not fear, for God hath willed his  
 bid - eth. The Spir - it and the gifts are ours through

mor - tal ills pre - vail - ing. For still our an - cient foe doth  
 man of God's own choos - ing. Dost ask who that may be? Christ  
 truth to tri - umph through us. The Prince of Dark - ness grim, we  
 him who with us sid - eth. Let goods and kin - dred go, this

seek to work us woe. His craft and power are great, and  
 Je - sus, it is he. Lord Sab - a - oth his name, from  
 trem - ble not for him. His rage we can en - dure, for  
 mor - tal life al - so. The bod - y they may kill; God's

Long before Isaac Watts began to Christianize the Psalms, Martin Luther had already done so when he created the text and tune for this, his most famous hymn, which is based on Psalm 46. Luther encouraged metrical versions of psalms as well as chanted psalms and new hymns.

# 69 I, the Lord of Sea and Sky

## Here I Am, Lord

G Am D G C G D  
*Leader or All*

1 I, the Lord of sea and sky, I have heard my peo - ple cry.  
 2 I, the Lord of snow and rain, I have borne my peo - ple's pain.  
 3 I, the Lord of wind and flame, I will tend the poor and lame.

G Em C Am7 D G

All who dwell in dark and sin my hand will save. I, who  
 I have wept for love of them. They turn a - way. I will  
 I will set a feast for them. My hand will save. Fin - est

Am D G C G D

made the stars of night, I will make their dark - ness bright.  
 break their hearts of stone, give them hearts for love a - lone.  
 bread I will pro - vide till their hearts be sat - is - fied.

G Em C Am7 C/G D D7

Who will bear my light to them? Whom shall I send?  
 I will speak my word to them. Whom shall I send?  
 I will give my life to them. Whom shall I send?

*Refrain*  
*All* G C G D G C G D G

Here I am, Lord. Is it I, Lord? I have heard you

Am7 G Am7 D G C G C

call - ing in the night. I will go, Lord, if you

G C G D G Am7 D7 G Am7 G

lead me. I will hold your peo - ple in my heart.

The stanzas here need to be understood as representing the voice of God, while the refrain (based on Isaiah 6:8) is the faithful human response to God's call. This becomes clearer if a leader or small group sings the stanzas, with the congregation joining on the refrain.

## FROM THE WESTMINSTER PULPIT

June 9 Matthew 26:31-46 Not My Will but Yours *Jesus wrestles with the disciples' abandonment and what lies before him- yet prays for the fulfillment of God's will.*

## WELCOME TO WORSHIP! LET US KNOW YOU'RE HERE.

Please take a moment to sign and pass the Friendship Register in the pews. There is a virtual option for those who are worshipping online. Simply scan the QR code with your smartphone camera to open or find on our website under the Quick Links, Virtual Friendship Register. Want to get involved? Fill out and return a "Using Your Gifts" form in the Friendship Register.



## LET'S GET TO KNOW EACH OTHER!

Name tags are available on the name tag cart in the Narthex. Please find yours and wear it on Sunday mornings, returning it before you leave. If yours is missing, please use a sticky badge and put your name on the 'I need a name tag' form.

## NEW HERE? MAKE SOME CONNECTIONS AT WESTMINSTER

Connections: An opportunity for those visiting or new who want to meet others and learn more about LIFE at Westminster. We meet from 10:00 - 10:40 in Pastor Daniel's office at the end of the Admin Hall. Kids are welcome or can go to Sunday School/Nursery. Keep your eyes open for the next Connections Calls after the summer months.

## IS GOD CALLING YOU TO JOIN THE WESTMINSTER FAMILY?

Here's how you can do it.

1. Fill out a New Member Form and put it in the offering plate in the narthex. Forms are available at the Hospitality Table in the narthex, or you may fill one out online under the visitor tab at [wpccharleston.org](http://wpccharleston.org) or using the QR code.
2. One of our pastors or someone from the Membership Committee will quickly be in touch, providing an opportunity individually or with a group to learn more about the church.
3. On a Sunday morning, you'll attend a meeting with the Session for reception into membership. We'll handle paperwork if you're transferring from another church or arrange baptism if you've never been baptized.
4. That same Sunday morning, you'll be introduced to the congregation during worship. Questions? Speak with an usher or one of our pastors following the service.



## WAYS TO GIVE TITHES AND OFFERINGS

Church Pew Envelope: Place cash or check in the Pew Envelope and drop it in the Offering Plate in the narthex.

Online: Click the "Give Now" button in the top right of our homepage [wpccharleston.org](http://wpccharleston.org).

Text: "charlestonwpc" to 73256. Thank you for giving.

## PRAYER REQUEST?

Leave your written requests in the basket next to the main sanctuary doors. WPC staff will pray for your request at our weekly meeting and throughout the week.

## SECOND SUNDAY SOCIAL POTLUCK TODAY!

All are welcome to a fried chicken luncheon in Covenant Hall following 11:00 a.m. worship the 2nd Sunday of each month. Cash donations for fried chicken welcome, bring a pot luck side or dessert to the kitchen during the Sunday School hour to share. Be filled with fellowship.

## WESTMINSTER PRESBYTERIAN BLOOD MOBILE NOW IN OUR PARKING LOT

Today, Sunday, June 9, 9:30 AM-1:30 PM in church parking lot. Schedule your donation today by scanning the QR code or visit [www.redcrossblood.org](http://www.redcrossblood.org) and type in sponsor code: Westminster



## MEN'S BIBLE STUDY TUESDAY, JUNE 11

Men of all ages: Join us for Breakfast and Bible Study from 8:00 - 9:00 a.m. on the Second Tuesday of every month. We are meeting for breakfast at Trotters Restaurant at Town and Country Inn and Suites (2008 Savannah Highway). Pastor Daniel will be leading; join us for the Fellowship and Encouragement!

## WONDERFUL WEDNESDAYS IN JUNE!

There are three more Wonderful Wednesdays before we break for the summer! Join us at 6:00 p.m. for supper, fellowship, and discipleship.

- Join us June 12 for dinner of Salad, Chicken or Shrimp Alfredo, Broccoli and Dessert with a 15-minute program on the explanation of *predestination* by Pastor Daniel!
- Join us June 19 for dinner of Salad, Red Rice, Green Beans, Chicken and Dessert with a program on Juneteenth by Pastor Daniel. WiNK will be meeting as well.
- Join us June 26 for dinner of Salad, Rice, Okra and Tomatoes, Corn, Meatloaf, Dessert with a program by Pastor Lissa as she shares the journey of her doctoral studies with Union Presbyterian Seminary (Charlotte campus). Pastor Lissa graduates on Saturday, June 29 as the Rev. Dr. Lissa Long

**PARK PLAYDATE:** All children are invited to join Ms. Claire at James Island County park for a playdate on June 20th from 10:00-12:00. The children can play on the playground and in the splash pad. Bring a picnic lunch. JI County Park Playdate and Picnic - June 20 10:00-12:00. (This is not a drop off event.) Please let Ms. Claire know if you can make it by emailing [cwinkles@wpccharleston.org](mailto:cwinkles@wpccharleston.org).

## READ GOOD BOOKS IN 2024!

Join Pastor Daniel in reading any (or all!) of these books in 2024. A variety of topics, authors, and genres, the choices are designed to stimulate the heart and mind and be a catalyst for growth in discipleship. Read each in preparation for the group discussion at 5:00 p.m. on the 4<sup>th</sup> Sunday of every other month.

**On June 23<sup>rd</sup> we'll discuss Elizabeth Speare's *The Bronze Bow*.** In this Newbery Medal-winning historical fiction novel set during the time of Jesus, young Daniel bar Jamin wants nothing more than to rid his land of Israel of Roman control once and for all. Yet when David meets Jesus of Nazareth, a traveling carpenter with a gentle message of love and forgiveness, David starts to realize that the hate festering in his heart might be his true enemy after all. \*This is a great book for readers as young as 6<sup>th</sup> grade. Books are available online or in the narthex (\$3)

- On **August 25<sup>th</sup>** we'll discuss Kaitlyn Schiess's *The Ballot and the Bible: How Scripture Has Been Used and Abused in American Politics and Where We Go From Here*.
- On **October 27<sup>th</sup>** we'll discuss Skye Jethani's *What if Jesus Was Serious about Heaven*.
- On **December 22<sup>nd</sup>** we'll discuss Keith and Kristyn Getty's *Sing!*

## ADULT DISCIPLESHIP: SUMMER SUNDAY SCHOOL

**Clothed in Christ: How the resurrection shapes our relationships in a divided world.**

We're taking an extended look at Colossians 3:12-14 where Paul uses the image of "putting on" the new self, which is affected by the resurrection and growing in the likeness of our creator. The characteristics he names are the natural outpouring of our resurrection-shaped lives and have implications for our relationships.

*Put on then, as God's chosen ones, holy and beloved, compassionate hearts, kindness, humility, meekness, and patience, bearing with one another and, if one has a complaint against another, forgiving each other; as the Lord has forgiven you, so you also must forgive. And above all these put on love, which binds everything together in perfect harmony.* Colossians 3:12-14

Each week, we'll explore one of the named characteristics and an applicable real-life situation. Join us from 10:00 - 10:45 in Covenant Hall. Pastor Daniel, Pastor Lissa, and other teachers will lead the class.

- June 2 Put on **Compassionate Hearts** when engaging with others about the most divisive topics. (Pastor Daniel)
- June 9 Put on **Kindness** directed toward people you know and people you don't know. (Rev. Becky Albright, CAP General Presbyter/Pastor to Pastors)
- June 16 Put on **Humility** in the political arena. (Pastor Daniel)
- June 23 Put on **Meekness** in sharing your faith with others. (Natasha Akery)
- June 30 Put on **Patience** in our relationships with children and people who act like them. (Paul and Laura Patrick)
- July 7 Put on **Forbearance**, carrying the weaknesses of our aging friends. (Pastor Lissa)
- July 14 Put on **Love** in all things. (Lindy Coleman)
- July 21 Put on **Forgiveness** in impossible situations. (Natasha Akery)



### SUMMER MISSION TRIPS

Thank you for your generous support for the Summer Mission Trips to Mexico and Brazil. We raised more than \$9,000, making it possible for us to travel and experience what we are doing together with God and our mission partners. Teams are preparing and request your prayers for the time spent with our mission partners. Team members are currently distributing the door crosses to team supporters.

*Xpujil, Mexico July 1-6: Daniel Smoak, Claire Winkles, Joshua Robinson, Macie Long, Lauren Smoak, Mattie Housley. Sao Paulo, Brazil July 17-24: Priscilla Holtzclaw, Dee Bee Wright, John Wright, Jane Warner, Ashley Snider, Debbie Redmon, Andrew Smoak*

### DO YOU TAKE PRIDE IN HOW THE CHURCH PROPERTY LOOKS? DO YOU HAVE A LITTLE TIME TO SPARE AND A BIG DESIRE TO GET INVOLVED AT WESTMINSTER?

Every week in the Tuesday *ENEWS* we will publish a few small projects to be done around the campus **at your convenience**. The list will be updated weekly, so if you don't see something within your skill set or interest, stay tuned! Here's a partial list:

- Set up tables in CH for events (WW, 2<sup>nd</sup> Sunday) and in Sanctuary for handbells
- Re-nail boards between church and Kickin' Chicken
- Painting outdoor signs
- Touch up painting in CH
- Water sod along sidewalk twice weekly if no rain
- Sprig jasmine ground cover by the front steps facing Sam Rittenberg Blvd. to fill in bare spots
- Deep clean kitchen
- Clean exterior windows, interior windows and sills

The office will coordinate these projects, so contact Suzann at 843-766-8311 or [office@wpccharleston.org](mailto:office@wpccharleston.org). For questions, supplies, ideas contact Carole Russell: text (843) 442-5276 or email [clsRussell@comcast.net](mailto:clsRussell@comcast.net).

### NEIGHBORS TOGETHER VOLUNTEER OPPORTUNITY

Every 3<sup>rd</sup> Wednesday of each month, approximately 6-8 church volunteers assist the staff at Neighbors Together, 105 Cosgrove Ave, North Charleston, in preparing and serving a hot meal for those in need. High-school youth age 16 and up are welcome. We typically meet at the church at 9:30 a.m. If you would like to serve once or even eventually be a more regular part of this dedicated team, would like more information and sign-up dates, please contact Suzann in the church office (843) 766-8311 or email [office@wpccharleston.org](mailto:office@wpccharleston.org)

### FOOD PANTRY NEEDS

Soap bars, toothpaste, individually packaged toothbrushes, and deodorant

### COMMUNITY SUPPORT NUMBERS

Mental Health Crisis Hotline 988

My Sister's House (domestic abuse) (843) 744-3242

Community Resource and Support Hotline 211

Al-Anon (843) 762-6999

Narcotics Anonymous (843) 852-3001

Wake-Up Carolina (support for families and individuals battling substance abuse) (843) 972-8154

[PostpartumSupportChas.org](http://PostpartumSupportChas.org)

## THIS WEEK AT WESTMINSTER

### Sunday, June 9

9:00 am      Worship Service  
9:30 am      Lowcountry Blood Drive in Westminster Parking lot  
10:00 am      Sunday School  
11:00 am      Worship Service  
11:15 am      Youth depart for Montreat  
12:00 pm      Second Sunday Lunch  
5:00 pm      Security/Hospitality meeting, Parlor  
6:00 pm      New Officer Training Session 4 CH/Library  
7:00 pm      AA Meeting, Covenant Hall

### Monday, June 10

11:30 am      Village Luncheon

### Tuesday, June 11

8:00 am      Men's Bible Study, Town & Country  
10:00 am      Staff meeting  
10:00 am      Circle 5, Parlor  
10:30 am      Circle 4, Room 4

### Wednesday, June 12

6:00 pm      Wonderful Wednesday  
7:00 pm      Sanctuary Choir Rehearsal  
7:00 pm      AA Meeting, Covenant Hall

### Thursday, June 13

### Friday, June 14

### Saturday, June 15

Youth return from Montreat

### Sunday, June 16

9:00 am      Worship Service  
10:00 am      Sunday School  
11:00 am      Worship Service

## WESTMINSTER PRAYS

Cary Alexandre (WPC)	Debbie Kieffer (Daniel Smoak)	Charles Reeves (Carol Patrick)
Joyce Aydlette (Becky Grafton)	Adam Kozel (Jennifer Binnicker)	Gloria Ricoma (Karen McInnes)
Daryn Baker (Jane Acker)	Fran Ligon (WPC)	Kevin Ritzel (Neil Ritzel)
Mary Ashley Barbot (Lisa Couch)	Walker Lundy (WPC)	Nita Rodemann (WPC)
Susie Cashion (WPC)	Jane Livingston (Tom Livingston)	Rachel Singletary (Sara Bobo)
Lydia Crosby (WPC)	John Martschink (WPC)	Jerry Smoak (WPC)
Martin Davis (Kevin Mikles)	Mary Martschink (WPC)	Mark Stender (Gloria Purcell)
Rose Derrick (Brenda Clarey)	Evan McMillian (Mary Stansell)	Judy Tag (WPC)
Andrea Dunn (Karen McInnes)	Love Moody (WPC)	Towne Family (WPC)
Pat Finn (Dee Bee Wright)	Carolyn Niblock (WPC)	Gloria Underhill (Laura Nunn)
Edward Fitzgibbon (Joan Frye)	Roy Nickles (WPC)	Janet Wilson & Family (Gloria Purcell)
Harold Fountain (Henry Shepard)	Joe Nuchols (Debbie McQueeney)	Robbie Yarnall (WPC)
Joan Frye (WPC)	Sylvia Peek (Gloria Purcell)	Robin Zemp WPC)
Bruce Hamilton (Theodosia Wade)	Nancy Plowden (WPC)	
Megan Hatfield (Debbie McQueeney)	Pratt Family (WPC Preschool)	
Chris Huff (Gloria Purcell)	Monnie Privette (Robert/Sylvia Coker)	
Brenda Jonsson (WPC)	Donna Purcell (WPC)	
David Kerr (Chris Kerr)	Reed Family (Dee Bee Wright)	

## PRAYER LIST UPDATED JUNE 2024

If you need to add or remove someone from the prayer list, please email Suzann at [office@wpccharleston.org](mailto:office@wpccharleston.org)

### **Friend of the Week**

Rachel Crews  
Benton House  
1445 Bluewater Way  
Charleston, SC 29414

### **Mission of the Week**

Neighbors Together  
2105 Cosgrove Avenue  
North Charleston SC 29405

### **Church Families**

Savanna Camp  
Ian and Caitlyn Campbell

## WESTMINSTER SESSION MEMBERS AND COMMITTEES

**Administration:** Tom Whetstone and Matthew Patrick; **Buildings and Grounds:** Matt Teitsort and Randy Davis; **Christian Education:** Lindy Coleman and Laura Patrick; **Fellowship:** Jonathan Bazzle, Betsy McLaughlin, and Mike Niblock; **Finance:** Norman Hook and Chuck Towne; **Membership:** Beth Georgen and John Dounian; **Missions:** Dee Bee Wright and Mary McAbee; **Preschool:** Abbie Mobley; **Worship:** Allyn Bruce and Ashley Snider; **Clerk:** Carole Russell; **Assistant Clerk:** Lindy Coleman; **Treasurer:** Nancy Dixon; **Assistant Treasurer:** Patty Stokes

### **Westminster Presbyterian Church**

1157 Sam Rittenberg Boulevard  
Charleston, SC 29407  
[www.wpccharleston.org](http://www.wpccharleston.org) (843) 766-8311

Rev. Dr. Daniel L. Smoak, Pastor, [dsmoak@wpccharleston.org](mailto:dsmoak@wpccharleston.org)

Rev. Lissa Long, Associate Pastor, [mlong@wpccharleston.org](mailto:mlong@wpccharleston.org)

Claire Winkles, Director of Youth & Children's Ministries, [cwinkles@wpccharleston.org](mailto:cwinkles@wpccharleston.org)

Robin Zemp, Director of Music, [rzemp@wpccharleston.org](mailto:rzemp@wpccharleston.org)

Sarah Shayban, Assistant Director of Music

Suzann Lilienthal, Office Administrator, [office@wpccharleston.org](mailto:office@wpccharleston.org)

Tommye Owen, Financial Administrator [finance@wpccharleston.org](mailto:finance@wpccharleston.org)

Alicia Crosby, Preschool Director, [preschool@wpccharleston.org](mailto:preschool@wpccharleston.org)

Meg Dorsel, Communications Coordinator, [mdorsel@wpccharleston.org](mailto:mdorsel@wpccharleston.org)